

INDOOR RECESSED



Unix

Serie di apparecchi da incasso multilampada per sorgenti alogene, a scarica o fluorescenti anche in RGB. La semplicità di installazione e la possibilità di utilizzare la cornice sia con battuta esterna oppure da incassare a filo controsoffitto o parete, la rendono versatile per qualsiasi applicazione.

Range of multi-light recessed versions for halogen and discharge or fluorescent (including RGB) lights. The easy installation and the possibility of using a frame installed either outer or recessed flush with the suspended ceiling or wall make the range versatile for any application.

Einbauleuchterserie für Entladungs-, Halogen- und Leuchtstofflampen auch in RGB Ausführung. Mit sichtbarem und verdecktem Rahmen für Wände und abgehängte Decken.



Cornice in alluminio estruso e acciaio, faretto orientabile in pressofusione di alluminio, staffe di fissaggio in acciaio per spessori da 2 a 25 mm per articoli con cornice a vista, e da 7 a 25 mm per cornici da rasare.

Extruded aluminium and steel frame, die cast aluminium swivel spot light, steel fixing brackets for thicknesses of 2-25 mm for items with visible frame and 7-25 mm for frames to be trimmed.

Rahmen aus stranggepresstem Aluminiumprofil und verzinktem Stahlblech, dreh- und schwenkbare Leuchten aus Aluguß, Befestigungsbügel aus Stahlblech für Deckenstärken - bei sichtbarem Rahmen 2 - 25 mm und verdecktem Rahmen von 7-25 mm.



Unix

INDOOR RECESSED

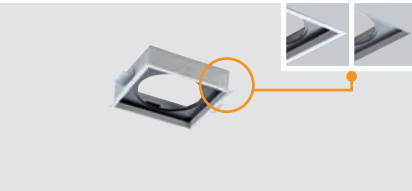
Cornici / Frames / Rahmen

Accessories

Cassaforma per laterizio.

Formwork for masonry.

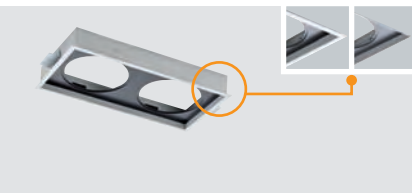
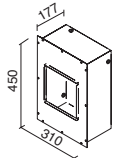
Einbaugehäuse für Mauerwerk



CODE	DIMENSIONS	WEIGHT	VOLUME	FINISH
□ 56804	210x210x55 mm	kg. 0,75	m ³ 0,004	A4
■ 56805	210x210x55 mm	kg. 0,75	m ³ 0,004	A57



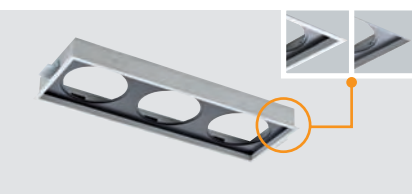
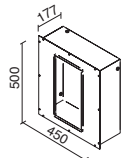
CODE
57900



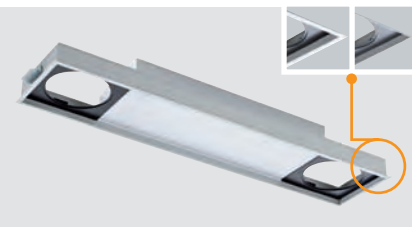
CODE	DIMENSIONS	WEIGHT	VOLUME	FINISH
□ 56814	210x400x55 mm	kg. 1,30	m ³ 0,007	A4
■ 56815	210x400x55 mm	kg. 1,30	m ³ 0,007	A57



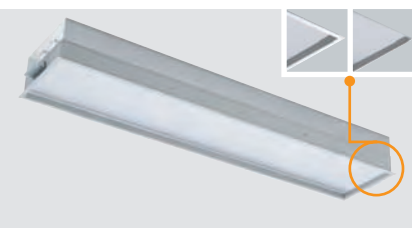
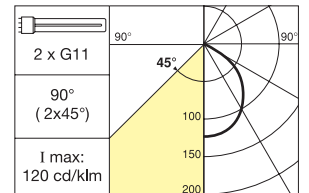
CODE
57910



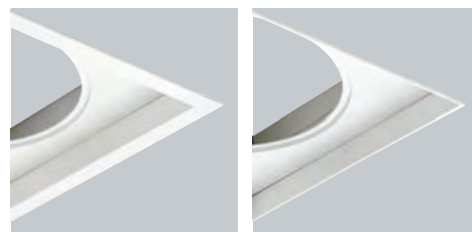
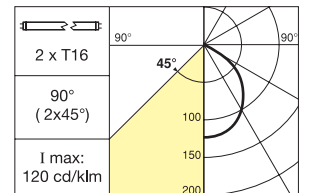
CODE	DIMENSIONS	WEIGHT	VOLUME	FINISH
□ 56824	210x590x55 mm	kg. 1,95	m ³ 0,010	A4
■ 56825	210x590x55 mm	kg. 1,95	m ³ 0,010	A57



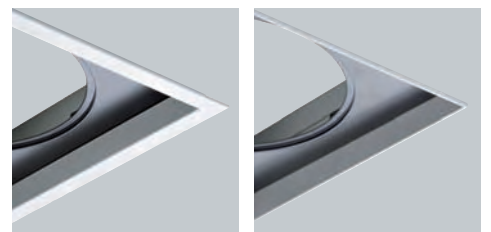
CODE	DIMENSIONS	ELECTRIFICATION	WEIGHT	VOLUME	FINISH
□ 56854	210x930x105 mm	TC-L 2G11 2 x 55W - 240V	kg. 3,05	m ³ 0,042	A4
■ 56855	210x930x105 mm	TC-L 2G11 2 x 55W - 240V	kg. 3,05	m ³ 0,042	A57



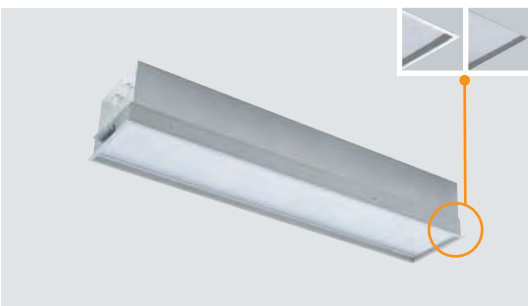
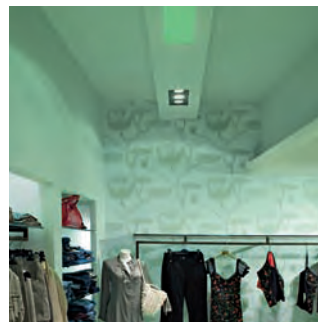
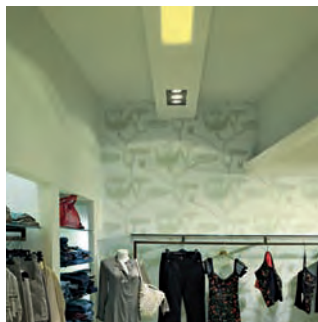
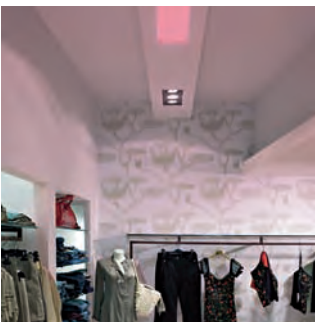
CODE	DIMENSIONS	ELECTRIFICATION	WEIGHT	VOLUME	FINISH
□ 56874	210x930x120 mm	T16 G5 2 x 39W - 240V	kg. 2,95	m ³ 0,042	A4
■ 56875	210x930x120 mm	T16 G5 2 x 39W - 240V	kg. 2,95	m ³ 0,042	A5



□ Cornice bianca e interno bianco.
White frame with white interior.
Weißer Rahmen und weiße Innenfläche.



■ Cornice grigia e interno nero.
Grey frame with black interior.
Grauer Rahmen und schwarze Innenfläche.



CODE	DIMENSIONS	ELECTRIFICATION	WEIGHT	VOLUME	FINISH
56864	210x930x190 mm	T16 G5 3 x 39W - 240V	kg. 4,05	m ³ 0,042	A4
56865	210x930x190 mm	T16 G5 3 x 39W - 240V	kg. 4,05	m ³ 0,042	A5

Unix

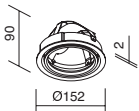
INDOOR RECESSED

Incasso / Recessing / Versenkter Einbau

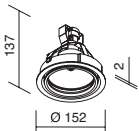
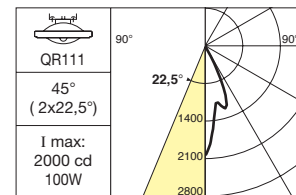
Apparecchi da incasso realizzati in pressofusione di alluminio da installare singolarmente o inglobare sulle cornici. Adatti per alloggiare sorgenti alogene o a scarica, da completare con relativi alimentatori.

Items for recessing made of die-cast aluminium; to be recessed individually or together in the Frames. They are suitable for housing halogen or discharge sources, to be completed with the relative drivers.

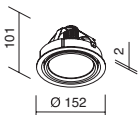
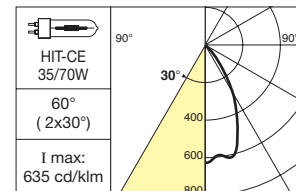
Einbauleuchten aus Aludruckguß, die in einfach oder mehrfach Rahmen eingebaut werden können. Leuchte für Halogen- oder Entladungslampen die mit dem entsprechenden Betriebsgerät komplettiert werden müssen.



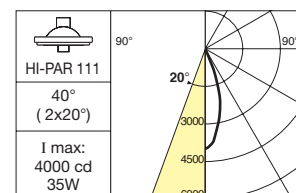
CODE	DIMENSIONS	ELECTRIFICATION	WEIGHT	VOLUME	FINISH
56834	Ø 152 mm	QR-111 G53 max 100W - 240V	kg. 0,55	m ³ 0,005	A4
56837	Ø 152 mm	QR-111 G53 max 100W - 240V	kg. 0,55	m ³ 0,005	A7



CODE	DIMENSIONS	ELECTRIFICATION	WEIGHT	VOLUME	FINISH
56844	Ø 152 mm	HIT-CE G12 35/70W - 240V	kg. 0,70	m ³ 0,005	A4
56847	Ø 152 mm	HIT-CE G12 35/70W - 240V	kg. 0,70	m ³ 0,005	A7



CODE	DIMENSIONS	ELECTRIFICATION	WEIGHT	VOLUME	FINISH
56884	Ø 152 mm	HI-PAR111 GX8,5 35/70W - 240V	kg. 0,57	m ³ 0,005	A4
56887	Ø 152 mm	HI-PAR111 GX8,5 35/70W - 240V	kg. 0,57	m ³ 0,005	A7





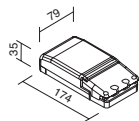
Alimentatori e trasformatori / Drivers and transformers / Vorschaltgeräte und Transformatoren



Trasformatore elettronico 100W/12V
100W/12V electronic power supply unit
Elektronisches Vorschaltgerät 100W/12V

CODE

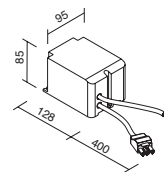
53510 x 56834 - 56837



Alimentatore elettronico 2x35W (HIT-HIPAR)
2x35W (HIT-HIPAR) electronic power supply unit
Elektronisches Vorschaltgerät 2x35W (HIT-HIPAR)

CODE

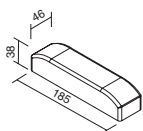
53540 x 56844/7 - 56884/7



Alimentatore elettromeccanico 70W (HIT)
70W (HIT) electromechanical power supply unit
Elektromechanisches Vorschaltgerät 70W (HIT)

CODE

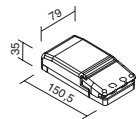
53570 x 56844 - 56847



Trasformatore elettronico 200W/12V
200W/12V electronic power supply unit
Elektronisches Vorschaltgerät 200W/12V

CODE

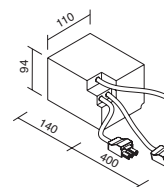
53520 x 56834 - 56837



Alimentatore elettronico 70W (HIT-HIPAR)
70W (HIT-HIPAR) electronic power supply unit
Elektronisches Vorschaltgerät 70W (HIT-HIPAR)

CODE

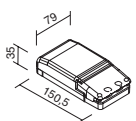
53550 x 56844/7 - 56884/7



Alimentatore elettromeccanico 2x35W (HIT)
2x35W (HIT) electromechanical power supply unit
Elektromechanisches Vorschaltgerät 2x35W (HIT)

CODE

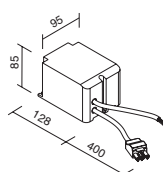
53580 x 56844 - 56847



Alimentatore elettronico 35W (HIT-HIPAR)
35W (HIT-HIPAR) electronic power supply unit
Elektronisches Vorschaltgerät 35W (HIT-HIPAR)

CODE

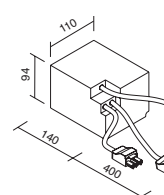
53530 x 56844/7 - 56884/7



Alimentatore elettromeccanico 35W (HIT)
35W (HIT) electromechanical power supply unit
Elektromechanisches Vorschaltgerät 35W (HIT)

CODE

53560 x 56844 - 56847



Alimentatore elettromeccanico 2x70W (HIT)
2x70W (HIT) electromechanical power supply unit
Elektromechanisches Vorschaltgerät 2x70W (HIT)

CODE

53590 x 56844 - 56847



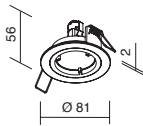
Spot

INDOOR RECESSED

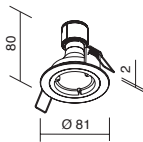
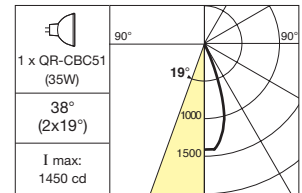
Apparecchi ad incasso fissi e orientabili finalizzati all'utilizzo di lampade alogene e scarica. Realizzati in alluminio pressofuso. Installazione su controsoffitti tramite molle. Da completare con relativi alimentatori.

Fixed and swivel items for recessing; to be used with halogen and discharge lights. Made of die-cast aluminium. Recessed installation in suspended ceilings with springs. To be completed with the relative drivers.

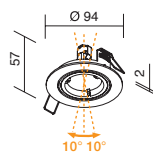
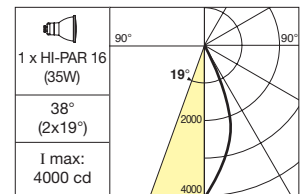
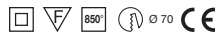
Starre und schwenkbare Einbauleuchten für Halogen- und Entladungslampen aus Aludruckguß zum Einbau in abgehängte Decken. Die mit dem entsprechenden betriebsgerät komplettiert werden müssen.



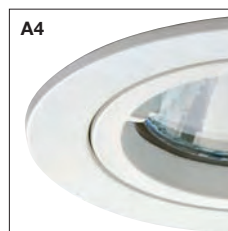
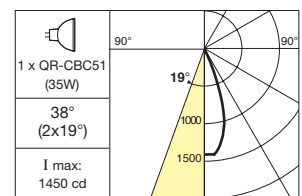
CODE	ELECTRIFICATION	WEIGHT	VOLUME	FINISH
57334	QR-CB51 GU5,3 max 50W - 12V	kg. 0,17	m ³ 0,001	A4
57338	QR-CB51 GU5,3 max 50W - 12V	kg. 0,17	m ³ 0,001	A8
57333	QR-CB51 GU5,3 max 50W - 12V	kg. 0,17	m ³ 0,001	A3



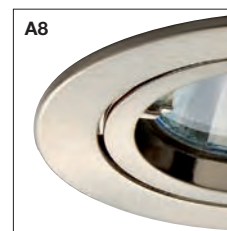
CODE	ELECTRIFICATION	WEIGHT	VOLUME	FINISH
57344	HI-CRI PAR16 GX10 35W	kg. 0,19	m ³ 0,001	A4
57348	HI-CRI PAR16 GX10 35W	kg. 0,19	m ³ 0,001	A8
57343	HI-CRI PAR16 GX10 35W	kg. 0,19	m ³ 0,001	A3



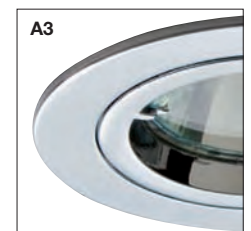
CODE	ELECTRIFICATION	WEIGHT	VOLUME	FINISH
57324	QR-CB51 GU5,3 max 50W - 12V	kg. 0,25	m ³ 0,001	A4
57328	QR-CB51 GU5,3 max 50W - 12V	kg. 0,25	m ³ 0,001	A8
57323	QR-CB51 GU5,3 max 50W - 12V	kg. 0,25	m ³ 0,001	A3



A4
Bianco RAL 9010
RAL 9010 white
Weiß RAL 9010



A8
Nichel satinato
Satinised nickel
Nickel matt

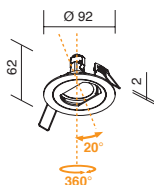


A3
Cromo
Chrome
Chrom

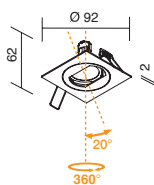
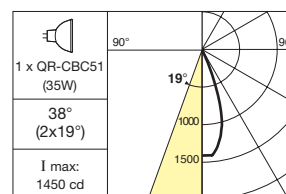
Apparecchi orientabili con schermatura parziale ad incasso finalizzati all'utilizzo di lampade alogene. Realizzati in alluminio pressofuso. Ottiche basculanti e combinazioni bicolore. Installazione su controsoffitti tramite molle. Da completare con relativi alimentatori.

Recess-type swivel items with partial screening for use with halogen lights. Made of die-cast aluminium. Pivoted optics and two-tone colour combinations. Recessed installings in suspended ceilings with springs. To be completed with the relative drivers.

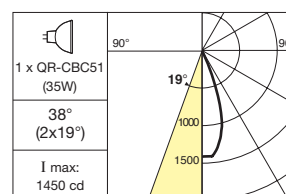
Dreh- und schwenkbare Einbaustrahler aus Aludruckguß für Halogenlampen, zum Einbau in abgehängte Decken. Die mit dem entsprechenden betriebsgerät komplettiert werden müsse.



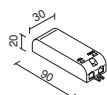
CODE	ELECTRIFICATION	WEIGHT	VOLUME	FINISH
57314	QR-CB51 GU5,3 max 50W - 12V	kg. 0,25	m ³ 0,001	A4
57318	QR-CB51 GU5,3 max 50W - 12V	kg. 0,25	m ³ 0,001	A8
57313	QR-CB51 GU5,3 max 50W - 12V	kg. 0,25	m ³ 0,001	A3
57313-B	QR-CB51 GU5,3 max 50W - 12V	kg. 0,25	m ³ 0,001	A34
57313-G	QR-CB51 GU5,3 max 50W - 12V	kg. 0,25	m ³ 0,001	A35
57313-N	QR-CB51 GU5,3 max 50W - 12V	kg. 0,25	m ³ 0,001	A37



CODE	ELECTRIFICATION	WEIGHT	VOLUME	FINISH
57304	QR-CB51 GU5,3 max 50W - 12V	kg. 0,25	m ³ 0,001	A4
57308	QR-CB51 GU5,3 max 50W - 12V	kg. 0,25	m ³ 0,001	A8
57303	QR-CB51 GU5,3 max 50W - 12V	kg. 0,25	m ³ 0,001	A3
57303-B	QR-CB51 GU5,3 max 50W - 12V	kg. 0,25	m ³ 0,001	A34
57303-G	QR-CB51 GU5,3 max 50W - 12V	kg. 0,25	m ³ 0,001	A35
57303-N	QR-CB51 GU5,3 max 50W - 12V	kg. 0,25	m ³ 0,001	A37



Trasformatori e alimentatori / Drivers and transformers / Vorschaltgeräte und Transformatoren



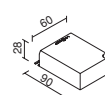
Trasformatore elettronico 60W/12V
60W/12V electronic power supply unit
Elektronisches Vorschaltgerät 60W/12V

CODE
57350



Trasformatore elettronico 100W/12V
100W/12V electronic power supply unit
Elektronisches Vorschaltgerät 100W/12V

CODE
53510

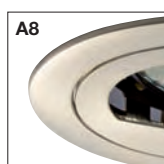


Alimentatore elettronico 35W (HIT-CRI-PAR)
35W (HIT-CRI-PAR) electronic power supply unit
Elektronisches Vorschaltgerät 35W (HIT-CRI-PAR)

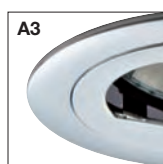
CODE
57360



A4
Bianco RAL 9010
RAL 9010 white
Weiß RAL 9010



A8
Nichel satinato
Satinised nickel
Nickel matt



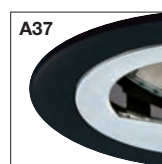
A3
Cromo
Chrome
Chrom



A34
Bianco / cromo
White / chrome
Weiß / Chrom



A35
Grigio / cromo
Grey / chrome
Grau / Chrom



A37
Nero / cromo
Black / chrome
Schwarz / Chrom